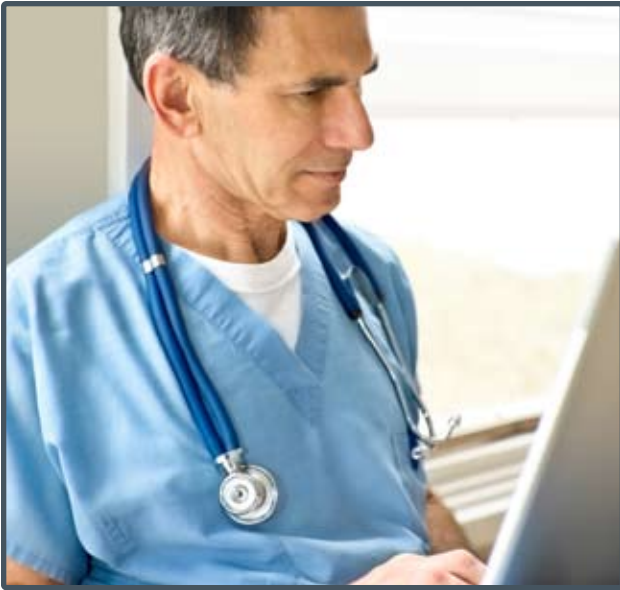


## **CUSTOMIZED ELEARNING MODULES FOR EPIC TRAINING IMPLEMENTATIONS**



To realize optimum return on your investment when implementing a new hospital system and new workflows, you need to ensure that your staff is properly educated and empowered to adapt to new technologies.

### **Customized Computer Based Learning: The Right Approach to Epic Training**

Creating engaging and interactive eLearning materials customized to your facility's exact processes and procedures to supplement your classroom efforts and, in some cases, replace them, is becoming essential. Customized eLearning programs provide benefits such as a consistent delivery, self-paced learning, interactive trainee participation and higher knowledge retention, while working with your principal educators to ensure the learning was completed and understood. It can also be used as a training tool post-implementation to provide consistent material for new employee orientation, agency resources, students, community and hospital physicians, and as refresher training when needed.

### **Why Customized eLearning for Your Epic Implementation?**

**Customized eLearning programs allow you to:**

- Quickly deliver customized training to employees in multiple locations at multiple times
- Reduce the amount of time spent in the classroom and maximize time spent on patient care
- Capture the specific workflows and processes that are unique to your individual institution
- Communicate universal or organization-wide workflows in a consistent manner, assuring all staff receive the same education and message (e.g., workflows related to regulatory compliance)
- Measure and report employee participation in training through Learning Management System (LMS) tools



- Evaluate employee retention of training course material by developing competency or proficiency assessments to match eLearning curriculum
- Modify course content in response to changes in hospital policies and procedures
- Assign training courses by job code; mix and match eLearning to meet the needs of varying job roles
- Incorporate interactive multimedia into the training, which appeals to students' visual and auditory senses

- Access to eLearning from organization intranets and websites
- Content changes can be made at any time, updating all computers running eLearning modules
- Optimizes training staff time and resources
- Staff can dial in and learn from their home or office
- Users can revisit the CBL's as a "refresher" course at any time
- Reusability for new employee orientation (NEO)
- Ability to deliver a personal message at the beginning of training to all end users

## Benefits of Customized eLearning

- Consistent and accurate content presented to all
- Each student can learn at their own pace and repeat areas and exercises that are not clear, building their confidence
- Trainees can do CBL's from anywhere your hospital sets up a computer with eLearning access—employee lounges, meeting rooms, nursing units, the cafeteria, the business office, etc.
- "In step" with current times and education technology

## In Conclusion

A blended approach utilizing eLearning development has been proven to lower the time in the classroom by 25-40% and a "customized" blended approach increases knowledge retention by over 30%. All these advantages will meet your goals of a successful implementation and smooth transition to EMR, CPOE and numerous other HIS modules.

## About Healthcare Informatics Associates

HIA has worked with many hospitals in supporting their Epic Clinical and Financial deployments. We are unique in that we have a consulting group that specializes in implementing Epic software. We can provide the subject matter consultants to work with your Subject Matter Experts to create customized eLearning programs that are effective and accurate, along with the instructional technology to develop customized programs that provide maximum retention.

We specialize in designing custom courseware from the perspective of the hospital employee and clinical care provider. Our design approach utilizes interactive, adult learning techniques such as embedded video and application simulations that convey relevant, applied competencies and increase learner retention.

